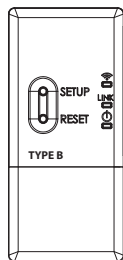


# TOSHIBA

## INSTALLATION MANUAL

### Wireless adapter



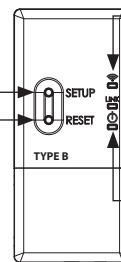
### Accessory part.

No.	Part Name		RB-N105S-G	RB-N106S-G
①	Wireless adapter		1	1
②	Connection cable		-	1
③	SCREW : M4X25		*2	*2
④	SCREW : M4X12		*1	*1

\*The number of parts may differ by model.

**SETUP button**  
Initial connection  
to Wi-Fi router

**RESET button**  
For system reset



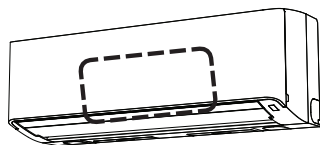
**WIRELESS LED**  
Show during A/C add  
step and sending  
signal to A/C

**LINK LED**  
Show during  
connecting process

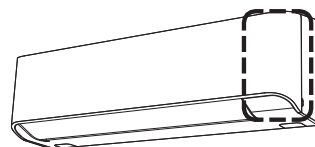
**POWER LED**  
Show for  
Power On

**“The Wireless adapter must be installed, maintained, repaired and removed by a qualified installer or qualified service person.”**

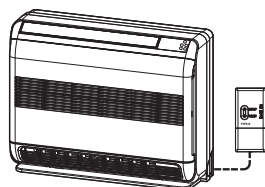
### Installation position (Inside AC unit) High - Wall type A



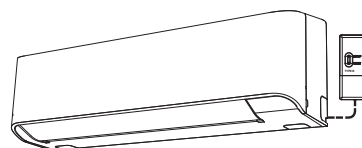
### High - Wall type B



### Installation position (Outside AC unit) Console chassis



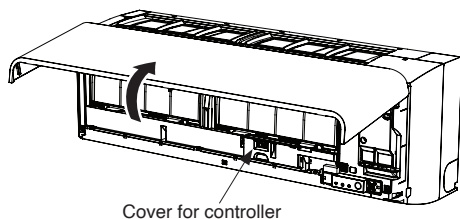
### High - Wall type C



### How to install Wireless adapter.

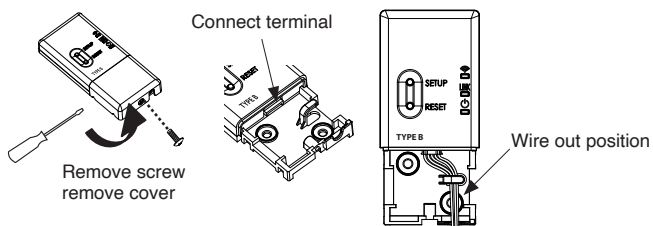
#### High - Wall type A (Inside AC unit)

1. Open air inlet grille and cover for controller.

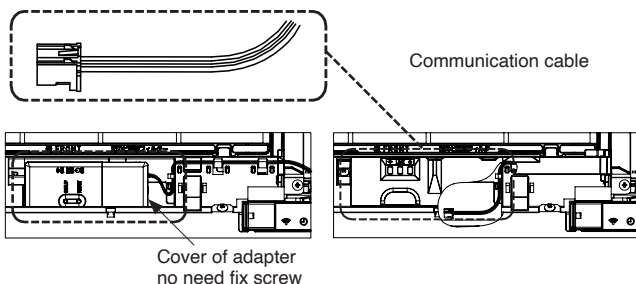


Cover for controller

2. Open Wireless adapter for connect terminal.



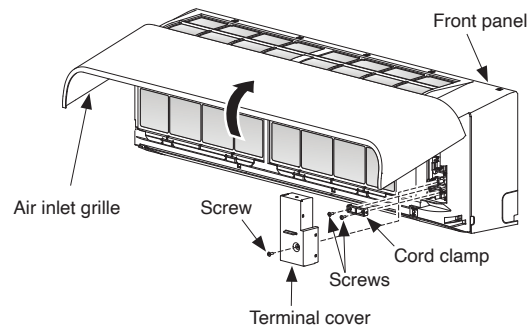
3. Open cover place the controller and connect communication cable from AC and close cover.



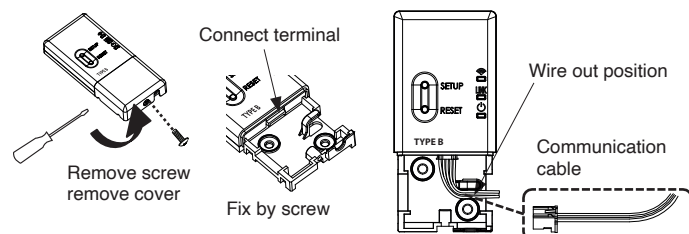
**Caution : Turn off power supply before installation**

#### High - Wall type B (Inside AC unit)

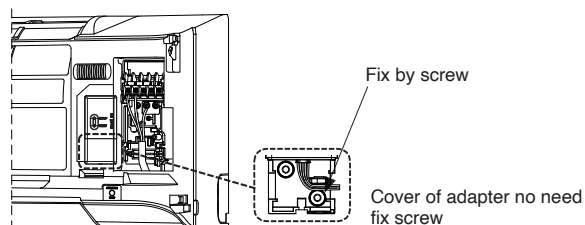
1. Open air inlet grille and terminal cover.



2. Open Wireless adapter for connect terminal.

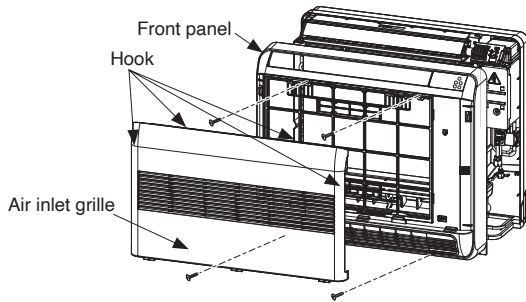


3. Place Wireless adapter to fixing position and connect communication cable from AC and close cover.

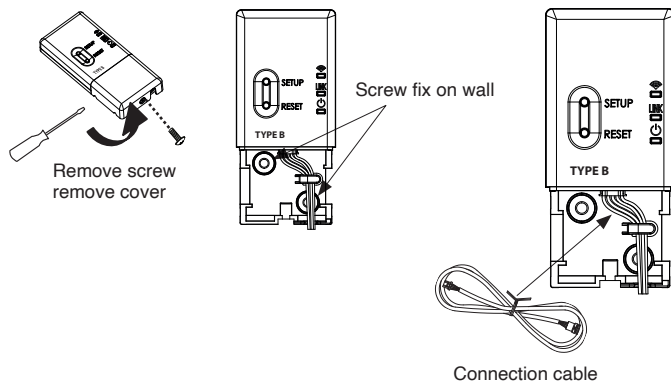


### Console chassis (Outside AC unit)

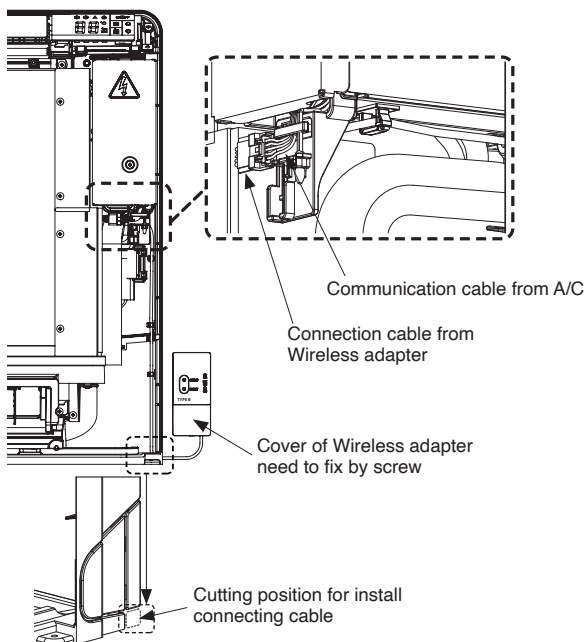
1. Remove the air inlet grille. Open the air inlet grille and remove the strap.
2. Remove the front panel (Remove 4 screws).



3. Open Wireless adapter for install on the wall and connect with Connection cable (accessory part)

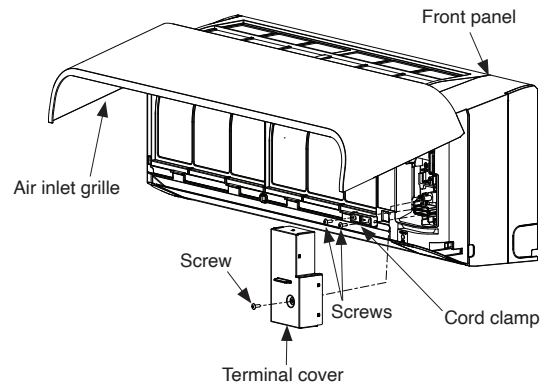


4. Insert lead wire in to unit and connect Wi-Fi terminal.

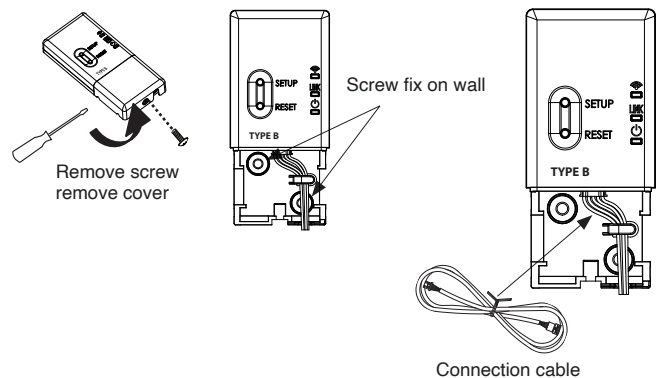


### High - Wall type C (Outside AC unit)

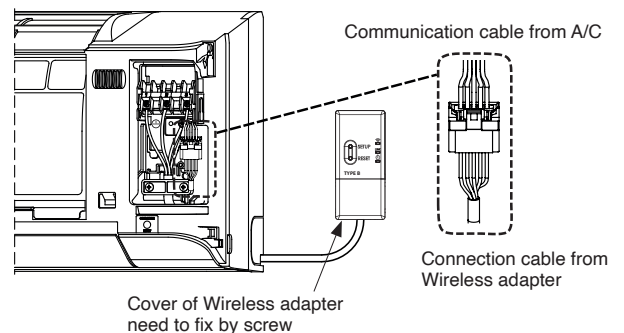
1. Open air inlet grille and terminal cover.



2. Open Wireless adapter for install on the wall and connect with Connection cable (accessory part)



3. Insert lead wire in to unit and connect Communication cable.



### Installation note

1. Do not install in a location where high humidity, high temperature and location that directly to sunlight and outside air.
2. Do not install nearly device that can produce electrical noise such as elevators, automatic door and industrial sawing machines.
3. Do not modify for any electrical part, it can cause for malfunction, electric shock or fire.
4. Install area should be covered by Wi-Fi signal from Router.
5. Wireless adapter compatible with router 2.4GHz band.