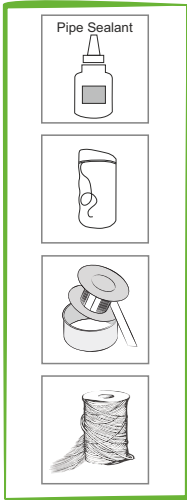
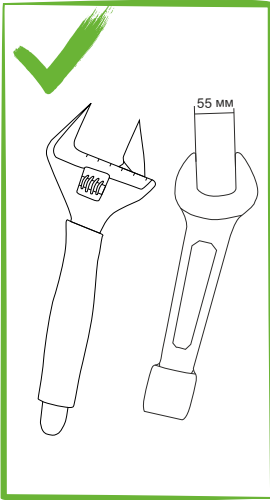
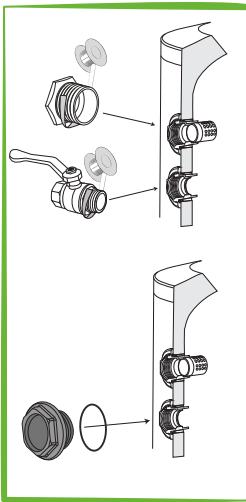
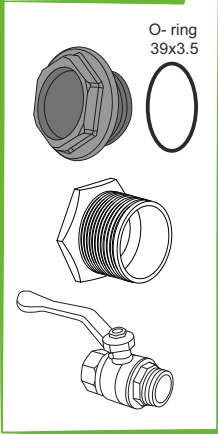


PLASTIC
PA66 GF30
G1 1/2"

OK



G1 1/2"



min 3 mm

G1 1/2"

max. 25 Nm

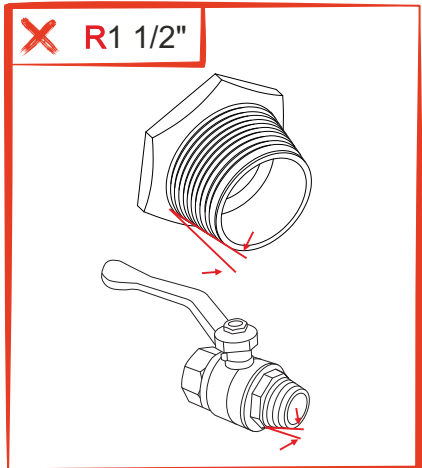
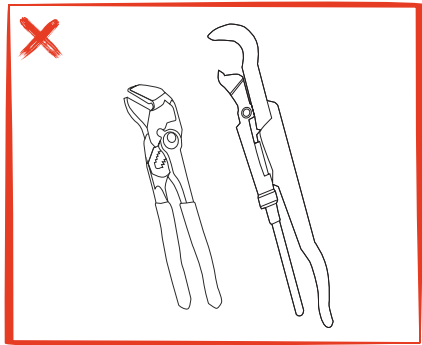
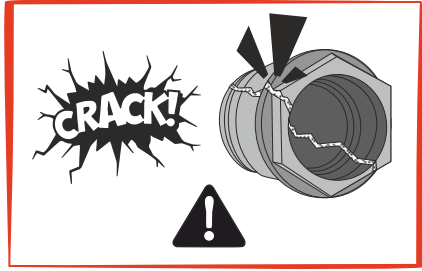
G1 1/2"

max. 25 Nm

O-ring
39x3.5



NO



0 mm

R1 1/2"

> 25 Nm

R1 1/2"

> 25 Nm

R1 1/2"

> 25 Nm

R1 1/2"

> 25 Nm